

# THE BUREAU

## Melbourne's Centre for Science

Expressions of Interest held by The Royal Society of Victoria



MAIN ENTRY PERSPECTIVE

*The Bureau* - a brand new Science and Learning facility that offers the opportunity for flexible workshops and exhibitions for the people of Melbourne.

Tying in closely with the previous Meteorology use of the site, the Bureau comprises a series of indoor and outdoor flexible spaces in a highly prominent position, that will help promote scientific education in an intimate and meaningful way.

Use of The Bureau may include:

- Masterclass workshops for both adult and children scientific education
- Gallery space and exhibitions
- Ongoing information sessions regarding ongoing scientific research or issues
- Catered functions such as fund raisers and dinners
- Networking events
- National Science Week events

The design of this concept building breaks down a definitive edge between that of the dense high rise CBD and the green, low rise northern suburbs, with two carefully considered interfaces; the North wall, and the South wall. Housed between these two walls is a collection of these flexible spaces with a strong pedestrian and vehicular connection to the CBD and the Carlton Gardens. Both feature walls relate strongly with the "old and new" of Melbourne's built environment, the recycled stone a reference to our many original 1800s buildings, and the distinctive angled timber a statement on what is possible today.



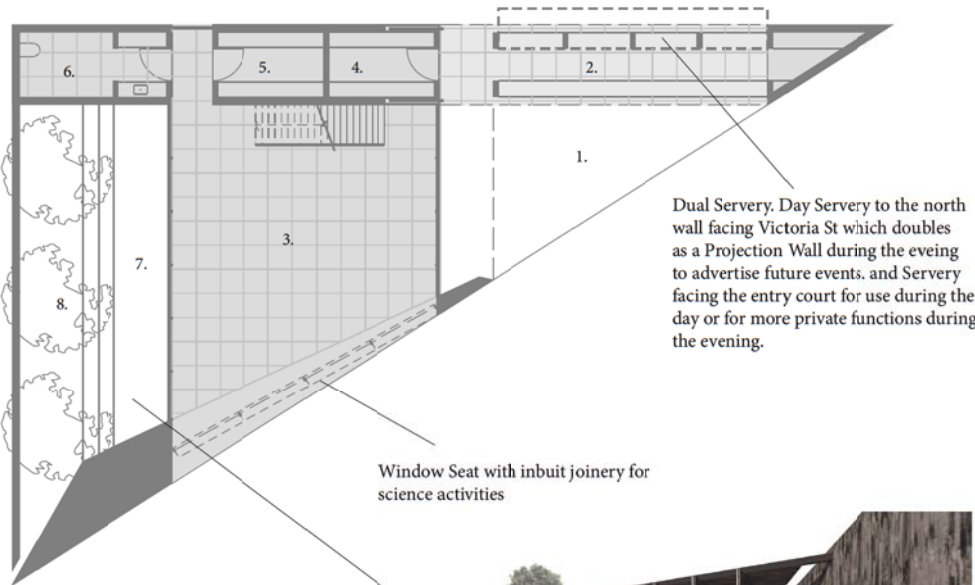
AERIAL PERSPECTIVE

THE BUREAU  
By Chris Barnes, Lily Jiang and Teuta Jerliu

# THE BUREAU

Melbourne's Centre for Science

Expressions of Interest held by The Royal Society of Victoria

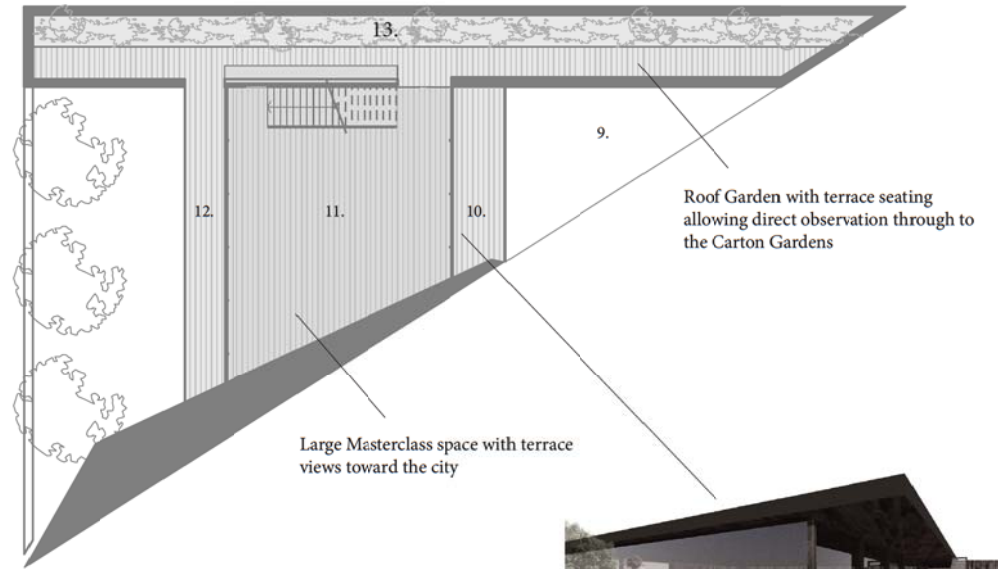


- 1. Entry Court
- 2. Kitchen
- 3. Masterclass Space 1
- 4. Store
- 5. Store
- 6. Accessible Unisex WC
- 7. Internal Courtyard & Gallery Space
- 8. Sculpture Garden

GROUND FLOOR PLAN  
Scale 1:200 @ A3



INTERNAL COURTYARD PERSPECTIVE  
Courtyard with tiered seating for external group gatherings. Internal courtyard include reflection pond, trees and science sculpture garden.



- 9. Entry Court (below)
- 10. Terrace
- 11. Masterclass Space 2
- 12. Terrace
- 13. Roof Garden

FIRST FLOOR PLAN  
Scale 1:200 @ A3



ROOFTOP TERRACE PERSPECTIVE  
Roof Terrace allowing inside outside connection to the upper level as well as views toward the City

THE BUREAU  
By Chris Barnes, Lily Jiang and Teuta Jerliu

# THE BUREAU

Melbourne's Centre for Science

Expressions of Interest held by The Royal Society of Victoria



NORTH ELEVATION  
Scale 1:200 @ A3

*The North Wall* - is made of locally sourced Victorian sandstone to the north façade to create a solid strong interface with the traffic along Victoria Parade. The wall acts as thermal mass, collecting the sun's energy during the day and transferring heat internally to control temperatures during the evening. This solid north wall also houses the entirety of the building's amenity, opening up to the pedestrians to both Latrobe St and Victoria Parade via the Kitchen. The Kitchen is designed for flexibility of use. It can be used to cater for *The Bureau* and any science based masterclass activities housed within, or it can be used separately by the community for activities such as pop up food stalls and soup kitchens.



SOUTH ELEVATION  
Scale 1:200 @ A3

*The South Wall* - is solid, but light, collapsing in shape to reflect the high density and sheer scale of its close skyscraper neighbours. The south wall provides the pedestrian with mystery and upon moments reveals itself to the passer by with a slit window toward the rear garden and science sculpture within, a long low level window runs along the footpath at just the right level to sit within and look out whilst limiting the pedestrian's view unless they choose to engage with the spaces by bending down to look inside. This offers a sanctuary for the occupier as viewer and mischief to the passer by when they choose to take a peak.



THE BUREAU  
By Chris Barnes, Lily Jiang and Teuta Jerliu